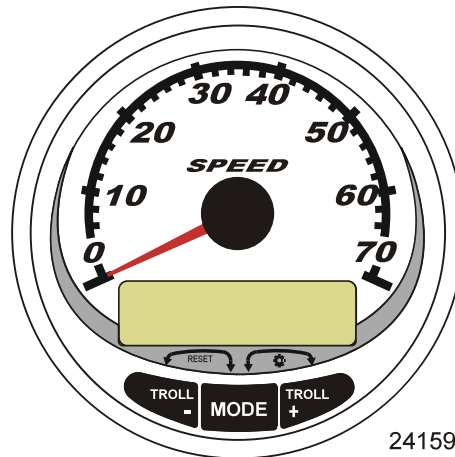


# SYSTEM TACHOMETER/SPEEDOMETER

- Digital Speedometer:** Displays the boat speed in miles per hour, kilometers per hour, or nautical miles per hour. The speedometer will use the paddle wheel for its low-speed readings, but will switch to the pitot or GPS (if connected) for high-speed readings. The transition point setting is described in Cal 2.
- Steering Angle:** Displays the relative position of the steering system. Available on Mercury MerCruiser models only. A steering angle sensor must be installed on the engine.

## Speedometer Quick CAL Calibration




SC1000 System Speedometer

This calibration is for setting the lighting and contrast.

- Press the "MODE/SELECT" and "+" buttons simultaneously for two seconds to bring up the "Quick Cal" display screen.
- Press the "-" or "+" button to select the option choice displayed in the [ ] brackets on the screen.
- Press "MODE/SELECT" to save the setting and advance through the calibration selections.

Quick CAL	
<p style="text-align: center;"><b>LIGHT</b></p> <p style="text-align: center;">[DOWN] [SAVE] [UP]</p> <p style="text-align: right;">23517</p>	Adjusts the brightness of the gauge lighting.

# SYSTEM TACHOMETER/SPEEDOMETER

<b>Quick CAL</b>	
<div style="border: 1px solid black; padding: 5px;"> <p style="text-align: center; font-weight: bold; font-size: 1.2em;">CONTRAST</p> <div style="text-align: center;">  </div> <p style="text-align: center;">[DOWN]      [SAVE]      [UP]</p> <p style="text-align: right; font-size: 0.8em;">23519</p> </div>	Adjusts the contrast of the display screen.

## Speedometer CAL 1 Calibration

This calibration turns the system display screens on and off.

**NOTE:** Depending on the engine type, not all screens will apply.

1. Press the "MODE/SELECT" and "+" buttons simultaneously for approximately six seconds to bring up the "Cal 1" display screen.
2. Press the "-" or "+" button to select the option choice displayed in the [ ] brackets on the screen.
3. Press "MODE/SELECT" to save the setting and advance through the calibration selections.

<b>Remote Lighting and Contrast</b>	
<div style="border: 1px solid black; padding: 5px;"> <p style="text-align: center;">REMOTE LCD LIGHT ?</p> <p style="text-align: center;">[ NO ]      [SAVE]      [YES ]</p> <p style="text-align: right; font-size: 0.8em;">23532</p> </div>	Adjusts the lighting levels on all gauges simultaneously from this gauge.
<div style="border: 1px solid black; padding: 5px;"> <p style="text-align: center;">REMOTE LCD CONTRAST ?</p> <p style="text-align: center;">[ NO ]      [SAVE]      [YES ]</p> <p style="text-align: right; font-size: 0.8em;">23533</p> </div>	Adjusts the contrast of another System Tachometer/Speedometer simultaneously from this gauge.

<b>Time</b>	
<div style="border: 1px solid black; padding: 5px;"> <p style="text-align: center;">CALIBRATION 1 TIME</p> <p style="text-align: center;">( NO )      ( SKIP )      ( EDIT )</p> <p style="text-align: right; font-size: 0.8em;">23534</p> </div>	Sets the time. Select "EDIT" to format the time or "SKIP" to advance to the next screen.
<div style="border: 1px solid black; padding: 5px;"> <p style="text-align: center;">CALIBRATION 1 TIME FORMAT 12H - M, D, Y</p> <p style="text-align: center;">(DOWN)      (SAVE)      ( UP )</p> <p style="text-align: right; font-size: 0.8em;">23535</p> </div>	Formats the time as either 12 hour month-day-year or as 24 hour day-month-year. Select "DOWN" or "UP" to change the format.

# SYSTEM TACHOMETER/SPEEDOMETER

Time	
<p>CALIBRATION HOUR</p> <p><b>1:42<sup>PM</sup></b></p> <p>(DOWN) (SAVE) (UP)</p> <p>23536</p>	<p>Adjusts the hours to match your local time. Select "DOWN" or "UP" to change the hour setting.</p>
<p>CALIBRATION MINUTE</p> <p><b>1:42<sup>PM</sup></b></p> <p>(DOWN) (SAVE) (UP)</p> <p>23538</p>	<p>Adjusts the minutes to match your local time. Select "DOWN" or "UP" to change the minute setting.</p>
Display Units	
<p>DISPLAY UNITS</p> <p><b>ENGLISH</b></p> <p>[DOWN] [SAVE] [UP]</p> <p>23539</p>	<p>Changes units of measurement between English or metric. Select "DOWN" or "UP" to change between English or metric units.</p>
<p>SPEED UNITS</p> <p><b>MPH</b></p> <p>[DOWN] [SAVE] [UP]</p> <p>23540</p>	<p>Changes the units in which speed is displayed. Choose from: MPH (Miles Per Hour), KN (Knots), or KMH (Kilometers Per Hour).</p>
Display Screens	
<p>STEERING ANG. SCREEN ?</p> <p><b>YES</b></p> <p>[ NO ] [SAVE] [ YES ]</p> <p>23542</p>	<p>The steering angle is displayed "YES" or off "NO". The steering angle sensor must be set to "YES" in the tachometer "CAL 2" external sensors calibration.</p>
<p>TEMP/CLOCK SCREEN ?</p> <p><b>YES</b></p> <p>[ NO ] [SAVE] [ YES ]</p> <p>23543</p>	<p>The split screen showing air temperature and time is displayed "YES" or off "NO".</p>
<p>FUEL USED SCREEN ?</p> <p><b>YES</b></p> <p>( NO ) (SAVE) ( YES )</p> <p>23544</p>	<p>The fuel used screen is displayed "YES" or off "NO".</p>
<p>CALIBRATION 1 FUEL USED</p> <p>(SKIP) (EDIT)</p> <p>30164</p>	<p>Selects how fuel used is calibrated. Press "+" to select "EDIT" or "SELECT" to by-pass how the fuel used is calibrated.</p>

# SYSTEM TACHOMETER/SPEEDOMETER

Display Screens	
<p>FUEL USED CAL : ENTER MULTIPLIER, OR REFUELED ?</p> <p>[MULT] [FUEL]</p> <p>30166</p>	<p>Selects how fuel used is calibrated with a multiplier or with refueling. Press "-" to select multiplier "MULT" or "+" to select refueling "FUEL."</p>
<p>FUEL USED CAL :</p> <p>MULTIPLIER = 1.0</p> <p>[DOWN] [SAVE] [ UP ]</p> <p>30167</p>	<p>Adjusts multiplier between 0.50 and 1.50. Press "-" to select "DOWN", or "+" to select "UP."</p>
<p>FUEL USED CAL :</p> <p>AMOUNT</p> <p>REFUELED = 0.0 G</p> <p>[DOWN] [SAVE] [ UP ]</p> <p>30168</p>	<p>Adjust fuel used calibration using the amount of fuel replaced. Press "-" to select "DOWN", or "+" to select "UP."</p>
<p>TRIP SCREEN</p> <p><b>YES</b></p> <p>( NO ) (SAVE) ( YES )</p> <p>23545</p>	<p>The trip screen is displayed "YES" or off "NO".</p>
<p>FUEL MGMNT SCREEN</p> <p><b>YES</b></p> <p>( NO ) (SAVE) ( YES )</p> <p>23546</p>	<p>The fuel management screen is displayed "YES" or off "NO".</p>
Simulator Mode	
<p>SIMULATOR MODE</p> <p><b>NO</b></p> <p>[ NO ] [SAVE] [ YES ]</p> <p>23547</p>	<p>Enables the simulation mode. (Used for demonstration purposes only.)</p>
Exit	
<p>SIMULATOR MODE</p> <p><b>EXIT ?</b></p> <p>[ NO ] [ YES ] [CAL 2]</p> <p>23549</p>	<p>Press "MODE/SELECT" to exit. Press "-" to go to the start of CAL 1. Press "+" to continue to "CAL 2".</p>

## Speedometer CAL 2 Calibration

This calibration configures the system sensor inputs.

# SYSTEM TACHOMETER/SPEEDOMETER

**NOTE:** Screens may vary depending upon the version of the gauge and the engine type.

1. Press and hold the "MODE/SELECT" and "+" buttons simultaneously for approximately nine seconds until the "CAL 2" display screen appears.
2. Press the "-" or "+" button to select the option choice displayed in the [ ] brackets on the screen.
3. Press "MODE/SELECT" to save the setting and advance through the calibration selections.

External Sensors	
CALIBRATION 2 EXTERNAL SENSORS (SKIP) (EDIT) 23569	Selects and calibrates external sensors that are installed in the system. Select (SKIP) to proceed to the next selection. Select (EDIT) to proceed to external sensor selection.
CALIBRATION 2 EXTERNAL SENSORS AIRTEMP ? ▶YES ( NO ) (SAVE) ( YES ) 23574	Is an air temperature sensor installed? Press "-" to select "NO" or "+" to select "YES".
CALIBRATION 2 EXTERNAL SENSORS GPS ? ▶YES ( NO ) (SAVE) ( YES ) 23582	Is a GPS sensor installed? Press "-" to select "NO" or "+" to select "YES".
CALIBRATION 2 EXTERNAL SENSORS USE GPS SPEED ? ▶YES ( NO ) (SAVE) ( YES ) 23596	Use the GPS input to drive the speed display? Press "-" to select "NO" or "+" to select "YES".
CALIBRATION 2 SEA TEMP OFFSET = 0 F (DOWN) (SAVE) ( UP ) 23592	Adjust the seawater temperature sensor to correct display readings that are too high/low. Press "-" or "+" to calibrate the temperature display "DOWN" or "UP".
CALIBRATION 2 TROLL CONTROL ? ENABLED ( NO ) (SAVE) ( YES ) 23617	To enable troll control select "YES", to disable select "NO".

# SYSTEM TACHOMETER/SPEEDOMETER

External Sensors	
<p>CALIBRATION 2 <b>EXIT ?</b> ( NO ) (SAVE) (CAL1) 23618</p>	<p>Press "MODE/SELECT" to exit. Press "-" to go to the start of CAL 2. Press "+" to continue to "CAL 1".</p>

## System Tachometer Display Screens

The diagram illustrates the tachometer's display system. On the left, six numbered screens are shown, each with a red circle containing a number. A red line connects these screens to a central tachometer gauge. The tachometer gauge has a scale from 0 to 7, labeled 'RPM x 1000'. Below the gauge are three buttons: 'TROLL -', 'MODE', and 'TROLL +'. A 'RESET' button is also visible above the 'MODE' button. The screens are:

1. BREAK-IN TIME: 65 MIN LEFT
2. BAT OK, TMP OK, PSI OK
3. 125 °F (with a thermometer icon)
4. 1.5 (with a trim icon)
5. TRIM 1.5, WATER PSI 12.5
6. 12.5 H2O PSI (with a water level icon)

23495

When the ignition is turned on, the tachometer will display the last screen that was displayed before the ignition was turned off. Press "MODE/SELECT" to change display screens. Revert back to the previous screen by pressing and holding "MODE/SELECT" for two seconds.

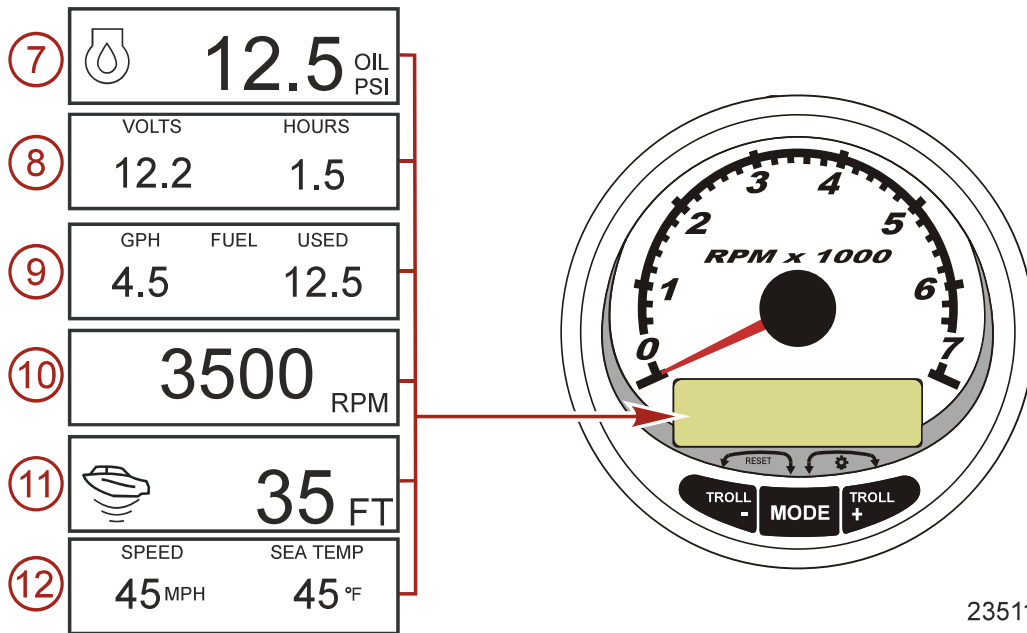
**NOTE:** Readings can be displayed in English (U.S.) or metric. Refer to **Tachometer Calibration**.

1. **Engine Break-in:** Displays the time remaining on the break-in period of a new engine. This screen will automatically disappear after the break-in period is complete.
2. **Quick Reference Screen:** Indicates that the battery, engine temperature, and pressures are operating properly.
3. **Temperature:** Displays the engine coolant temperature.

# SYSTEM TACHOMETER/SPEEDOMETER

4. **Power Trim Angle:** Displays the trim angle of the outboard or sterndrive up to the maximum trim angle and then displays the trailer angle. 0 = down, 10 = maximum trim, and 25 = full trailer.
5. **Power Trim Angle/Water Pressure:** Displays the trim angle of the engine and cooling system water pressure.
6. **Water Pressure:** Displays the cooling system water pressure at the engine.

*NOTE: Depending on the engine type, not all screens will apply.*



7. **Oil Pressure:** Displays the engine oil pressure in "PSI" or "BAR".
8. **Battery Voltage:** Displays the voltage level (condition) of the battery. Also records the running time of the engine.
9. **Fuel Flow:** Displays the engine fuel use in gallons per hour or liters per hour.
10. **Digital Tachometer:** Displays the engine speed in revolutions per minute (RPM).

# SYSTEM TACHOMETER/SPEEDOMETER

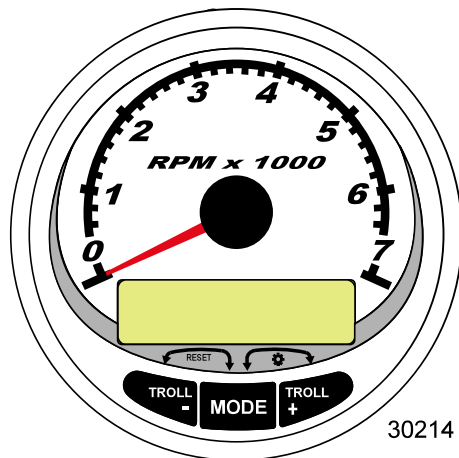
11. **Water Depth:** Displays the depth of water under the transducer if connected. The water depth screen can be turned on or off in CAL 1 calibration. The alarm can be set to trigger whenever the boat moves into water shallower than the alarm level. Refer to CAL 2 calibration for water depth alarm and offset settings.

*NOTE: A depth transducer (purchased separately) must be connected to the system for this screen to operate.*

12. **Speed/Temp:** Displays a split screen of seawater temperature and vessel speed.

*NOTE: A speed input sensor must be connected to the system for this screen to operate.*

## Tachometer Quick CAL Calibration





SC1000 System Tachometer

This calibration is for setting lighting and contrast.

1. Press the "MODE/SELECT" and "+" buttons simultaneously for approximately two seconds or until the "QUICK CAL" screen appears.
2. Press the "-" or "+" button to select the option choice displayed in the [ ] brackets on the screen.
3. Press "MODE/SELECT" to save the setting and advance through the calibration screens.



# SYSTEM TACHOMETER/SPEEDOMETER

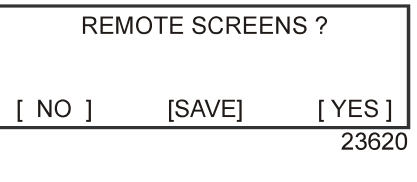
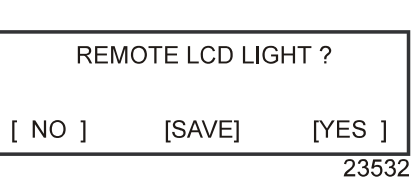
Quick CAL	
	Adjusts the brightness of the gauge lighting.
	Adjusts the contrast of the display screen.

## Tachometer CAL 1 Calibration

This calibration turns the system screens on and off.

**NOTE:** *The screens may vary depending upon the version of the gauge.*

1. Press and hold the "MODE/SELECT" and "+" buttons for approximately seven seconds until the "CAL 1" screen appears.
2. Press the "-" or "+" button to select the option choice displayed in the [ ] brackets on the screen.
3. Press "MODE/SELECT" to save the setting and advance through the calibration screens.

Tachometer CAL 1 Calibration - Remote Light and Contrast	
	If "YES" is selected, then screen changes made on this tachometer will effect all tachometers in the system. All tachometers need the screen set to "YES" for this function to work.
	Adjusts the lighting levels on all gauges simultaneously from this gauge. If "YES" is selected, then lighting level changes made on this tachometer will effect all tachometers in the system. All tachometers need the screen set to "YES" for this function to work.