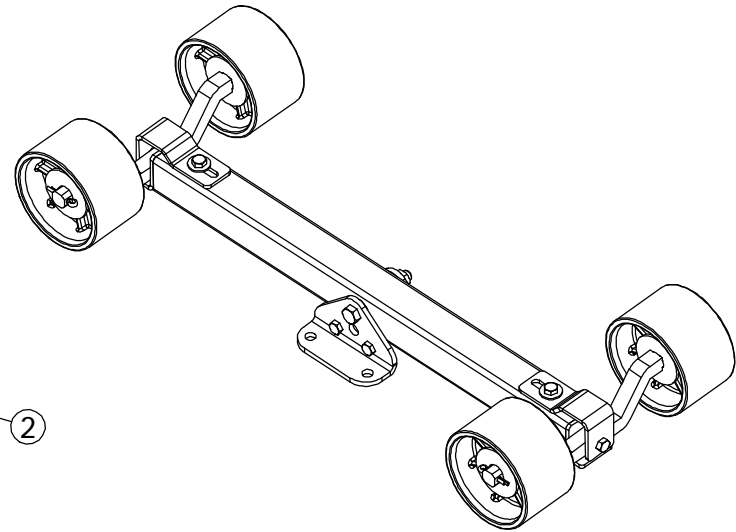
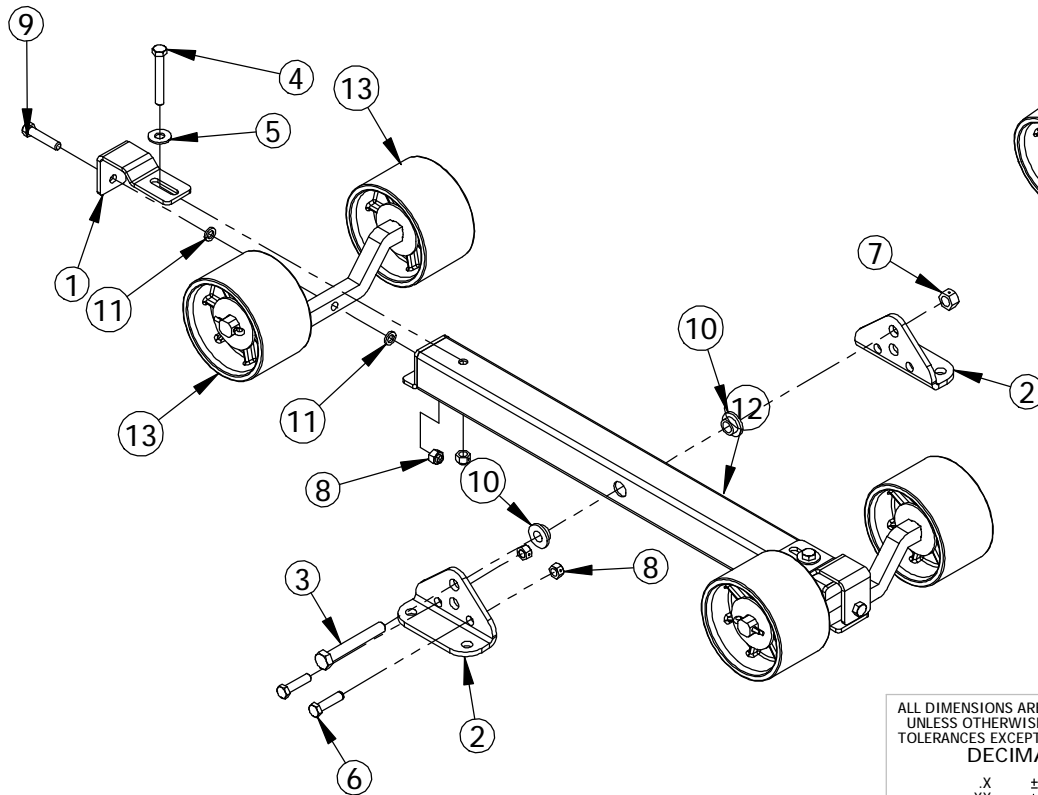


ITEM NO.	PART NUMBER	DESCRIPTION	QTY.
1	100-03912	ROLLER CAP BRACKET	2
2	100-04492	ROLLER BEAM BRACKET	2
3	210-00013	.50"-13 X 3.50" HX HD BOLT	1
4	210-00023	.375"-16 X 2.75" HX HD BOLT	2
5	210-00025	.375" FLAT WASHER	2
6	210-00045	.375"-16 X 1.50" HX HD BOLT	2
7	210-00061	.50"-13 CENTERLOCK HEX NUT	1
8	210-00076	.375"-16 CENTERLOCK HEX NUT	6
9	210-00178	.375"-16 X 1.75" HX HD BOLT	2
10	229-00229	NYLON WASHER	2
11	229-00358	WASHER	4
12	300-01655	ROLLER TUBE WELD	1
13	310-01505	ROLLER SUB-ASSEMBLY	2



ALL DIMENSIONS ARE IN INCHES
UNLESS OTHERWISE STATED
TOLERANCES EXCEPT AS NOTED
DECIMALS:
.X ±0.100
.XX ±0.060
.XXX ±0.030
.XXXX ±0.010

ANGLES:
±1°
ALL FORMED ANGLES
EQUAL 90° UNLESS
NOTED OTHERWISE

() INDICATES REFERENCE

THE INFORMATION IN THIS DRAWING IS THE SOLE
PROPERTY OF KARAVAN TRAILERS, INC. ANY
REPRODUCTION IN PART OR WHOLE WITHOUT
THE WRITTEN PERMISSION OF KARAVAN TRAILERS,
INC. IS PROHIBITED.

APPROVED BY:

DRAWN BY:

Kay Hopf

DATE:

06-28-11

SHEET:

1 OF 1

SCALE:

N/A

KARAVAN

TITLE:

ROLLER ASSEMBLY

MAT'L:

SEE B.O.M.

FINISH:

-BL, -GL

DWG. #:

310-02926-A

DWG. REV.	ECR/NDR NUMBER	REVISED BY	DATE	DESCRIPTION
A	15300	KMH	06-28-11	DRAWING CREATED