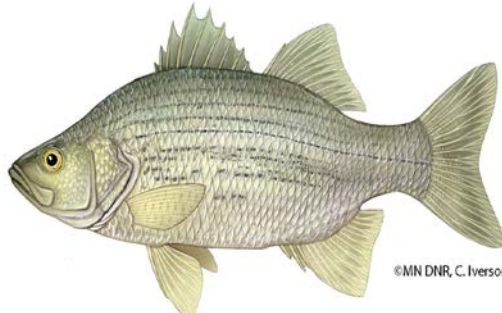
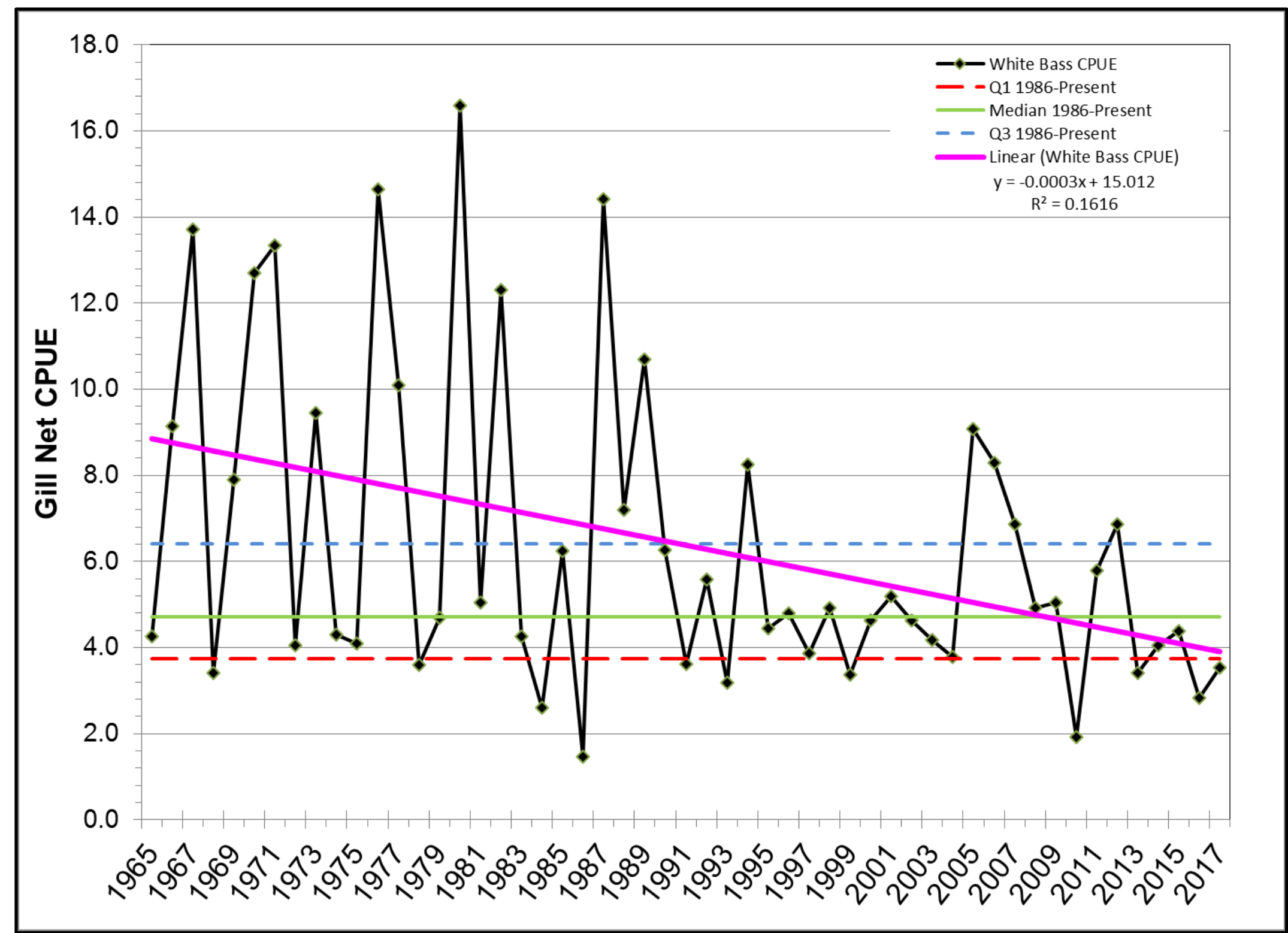
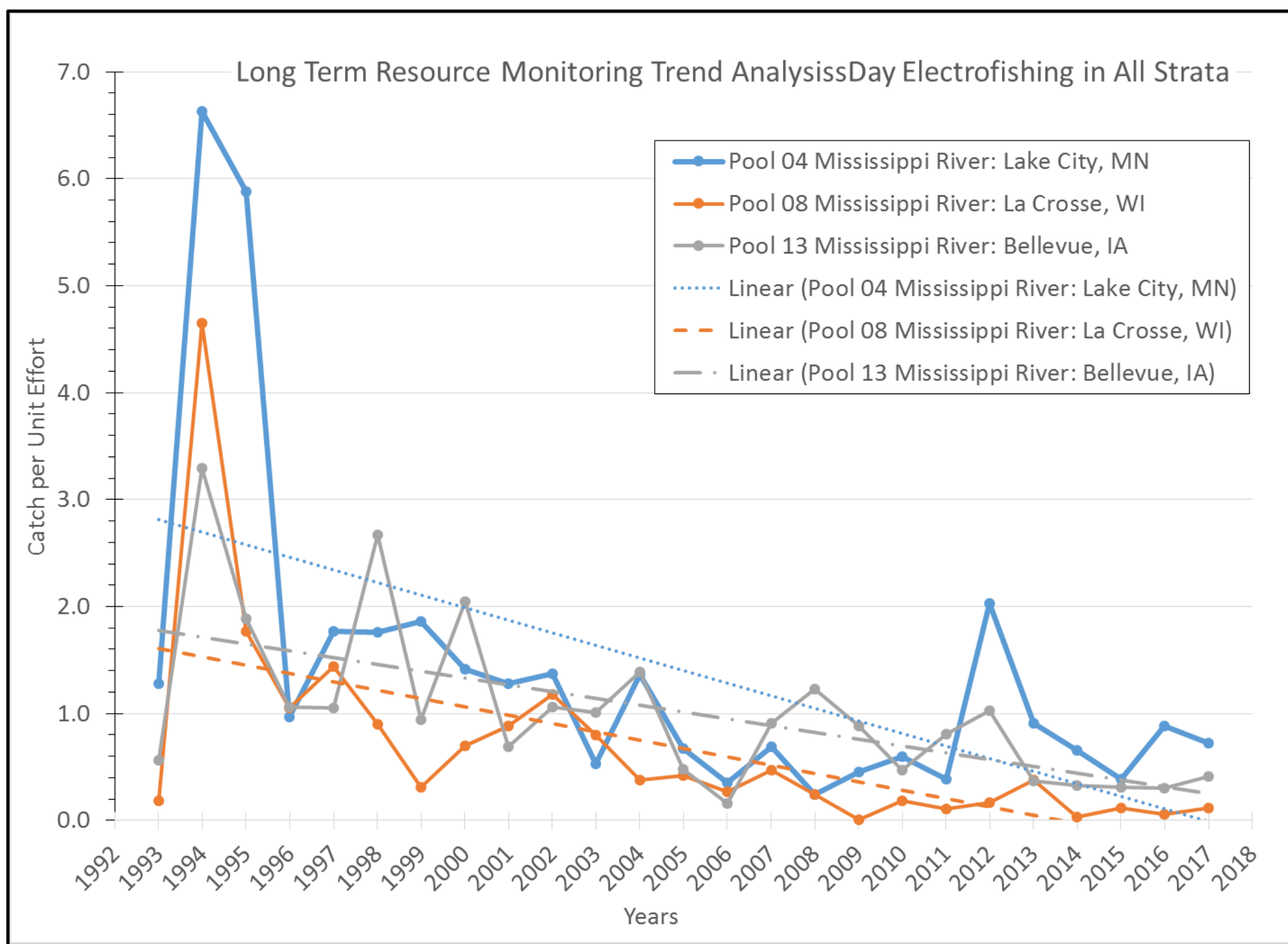


White Bass Population Information

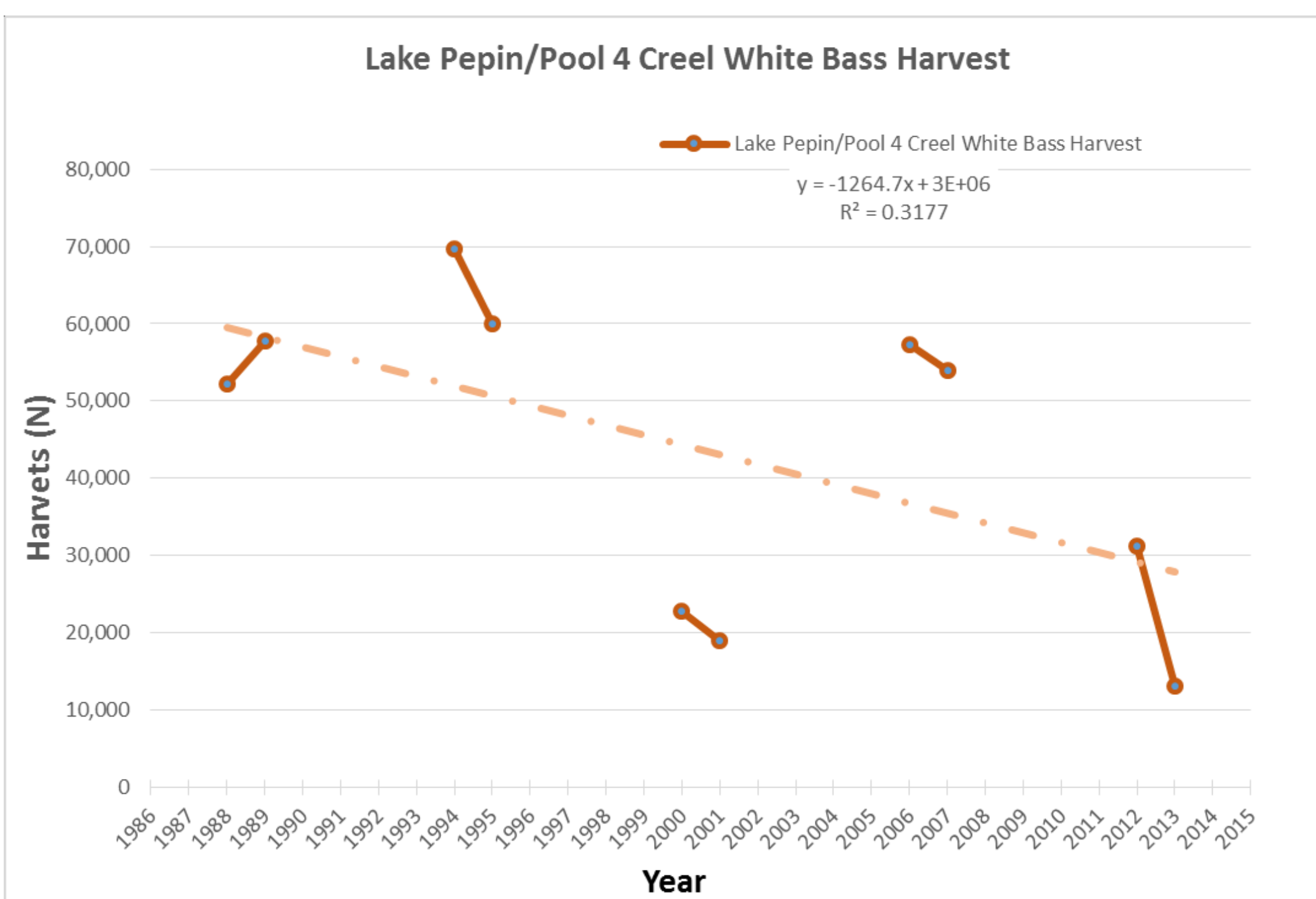
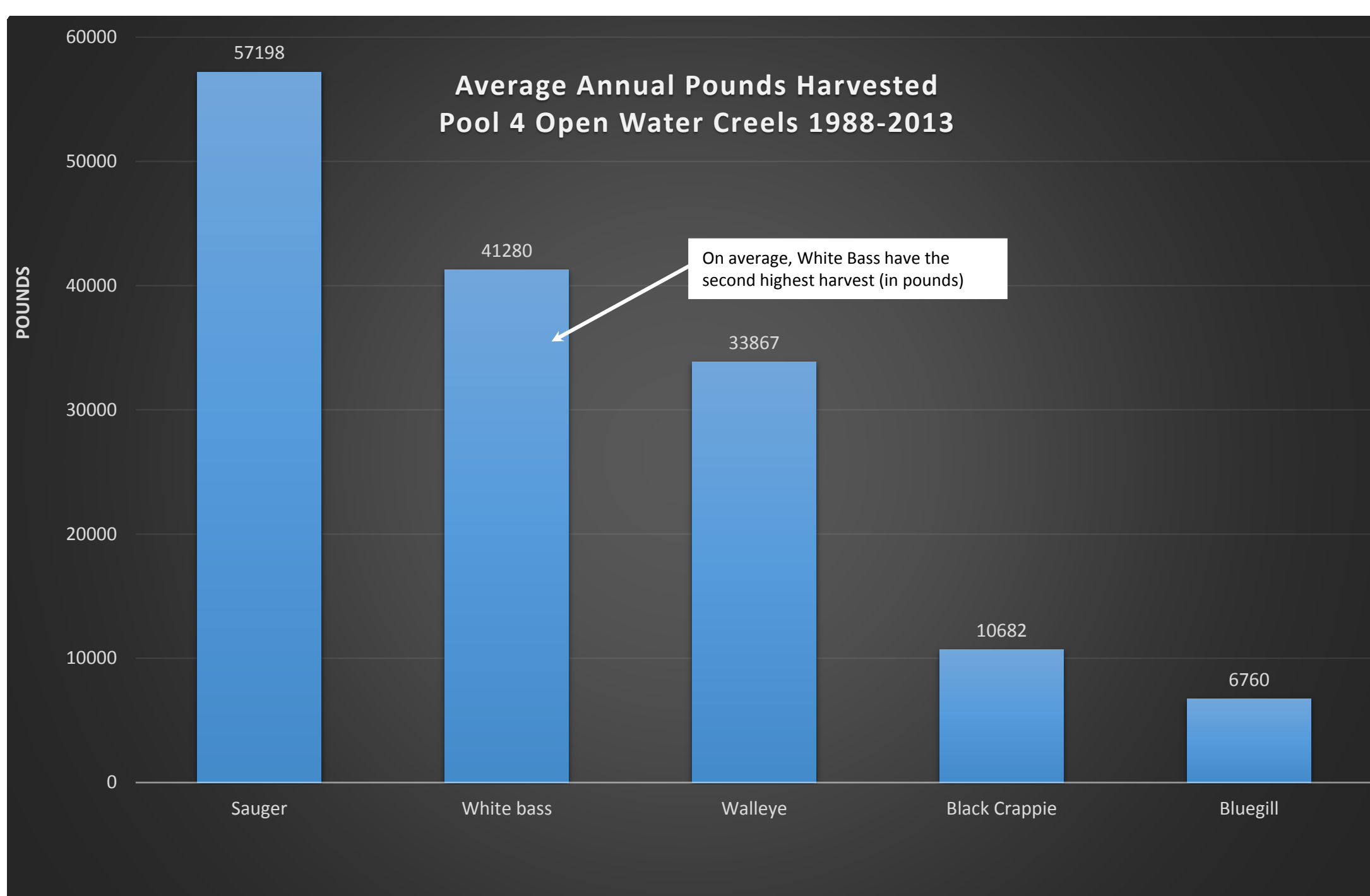


Pools 4, 8 & 13 - electrofishing

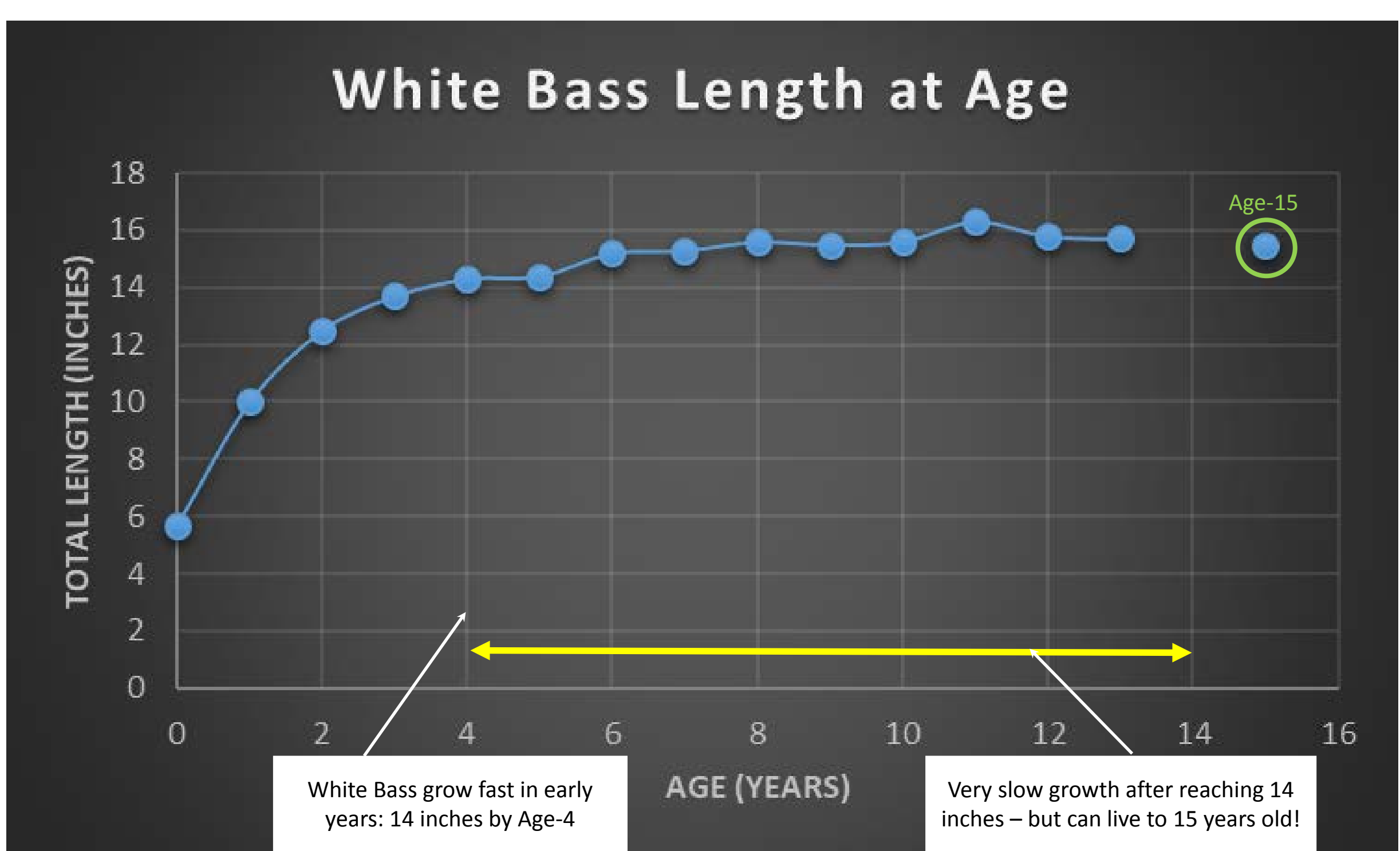
Pools 4 – gill net sampling



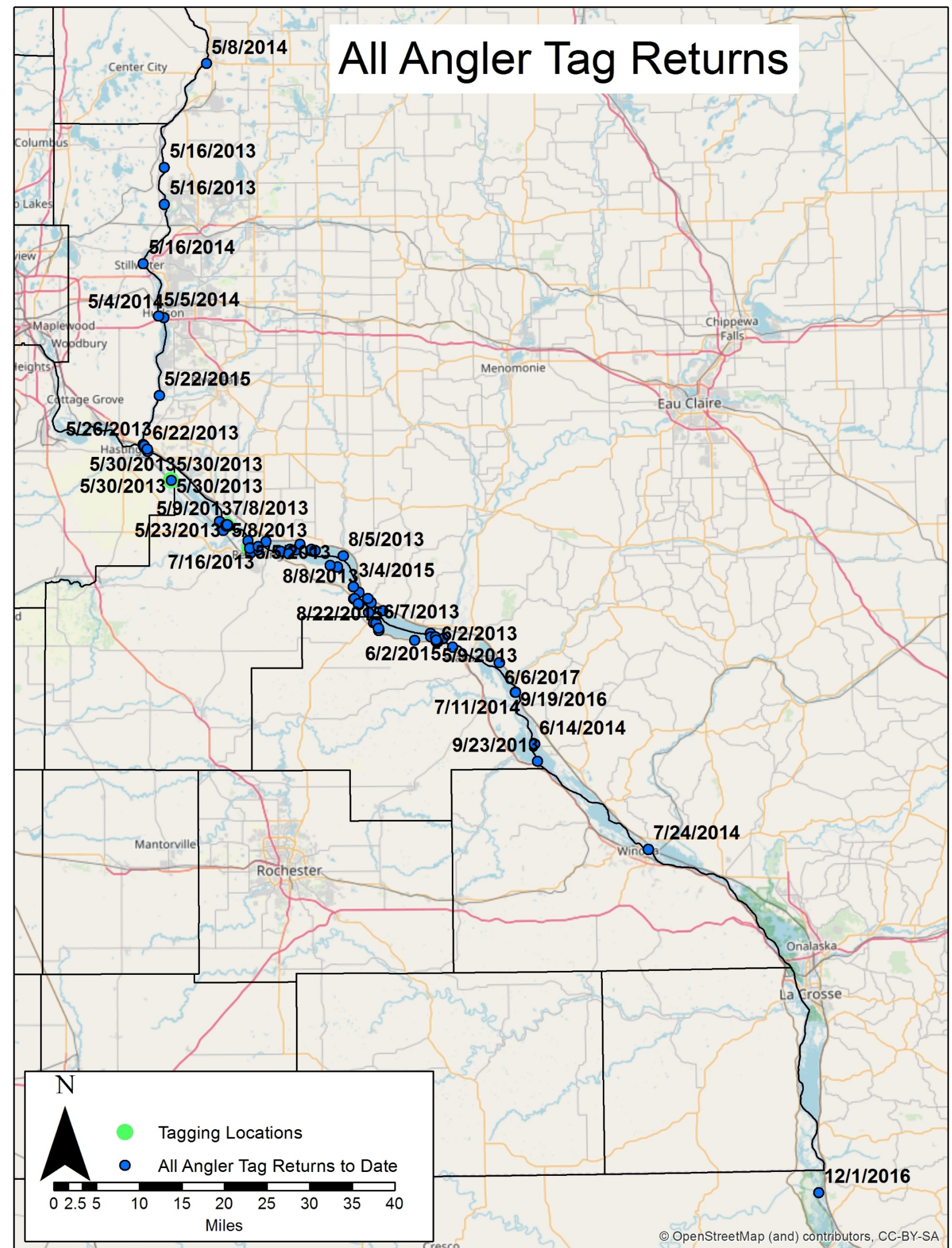
Multiple long term data sets on the Mississippi River indicate that the White Bass population is declining. The decline has no clear cause, but may be linked to changes in habitat or water clarity and harvest may now be directed at a smaller population.



Creel surveys on Pool 4 have shown that White Bass are the second or third most harvested species each year. Decreasing trends in harvest of White Bass is mirroring trends in overall abundance.



White Bass have historically been managed with generous bag limits in the upper Midwest, much like panfish species that have relatively short life spans and high turnover. However, recent analysis of age and growth show that White Bass live much longer in the river than previously thought (up to 15 years), but reach a large size in only 4-5 years.



White Bass are very mobile. A study conducted in 2013 by MN DNR tagged ~2500 White Bass primarily in upper Pool 4. The tag returns show movement from Taylor's Falls on the St. Croix and the Apple River in Wisconsin to as far south as Lansing, IA in Pool 9.